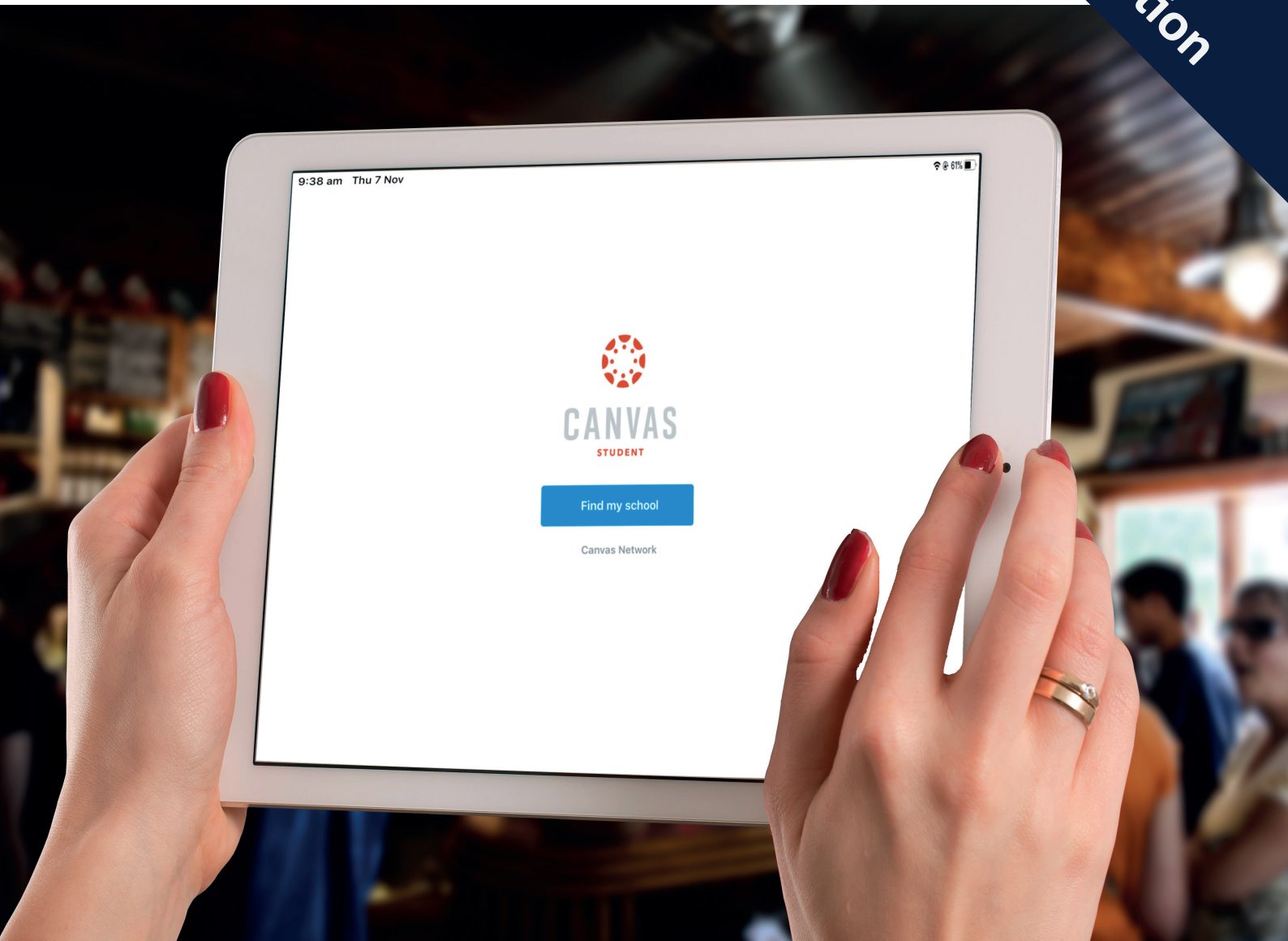


# Canvas User Guide Adobe Scan Application

v2.1  
Includes updated  
instructions to return work  
using Adobe Scan Application



Guide based on

iPad Pro 10.5

iPadOS v15.1

Adobe Scan v21.10.26

updated Dec 2021



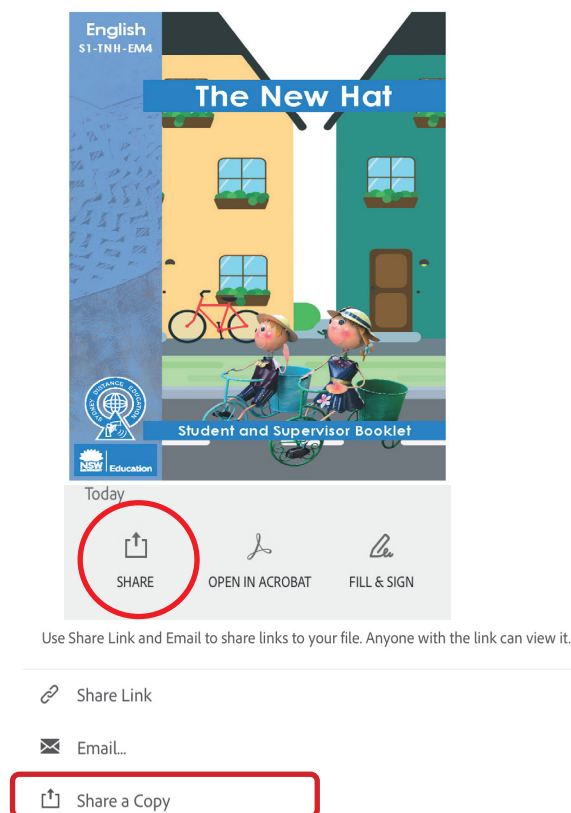
**SYDNEY DISTANCE EDUCATION PRIMARY SCHOOL**

# Returning Scanned Work using Adobe Scan

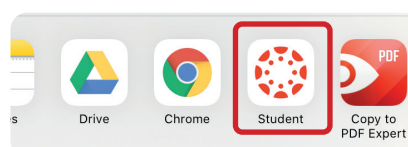
( 'Returning school work using Canvas App and Adobe Scan' )

**To complete the following steps, you will need access to internet/wifi.**

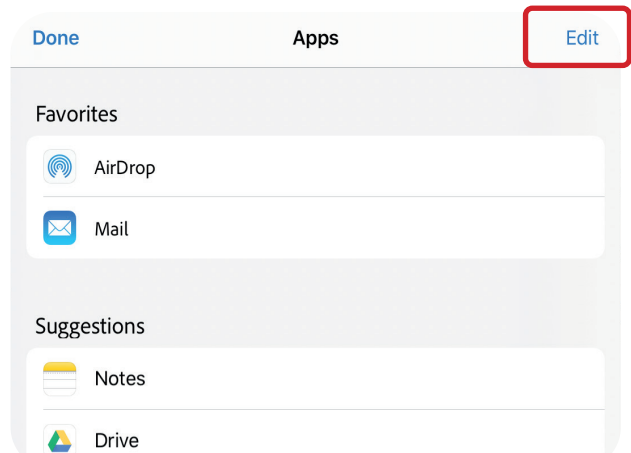
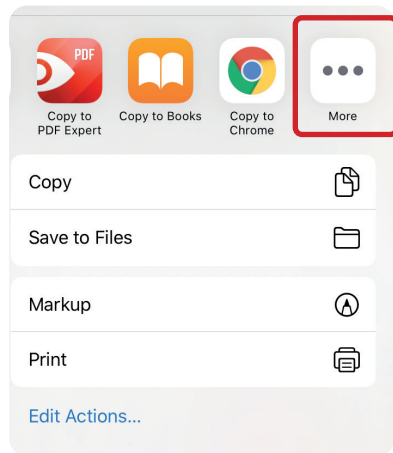
1. Please ensure you are signed in to the Canvas Student App.
2. Launch Adobe Scan.
3. After watching the video and understanding how to save the document as a PDF file, follow the steps on how to submit to Canvas.
4. Select the scanned PDF file to be submitted to a Canvas assignment.
5. Tap '**share**' button, then tap '**Share a Copy**'.



6. Tap '**Student**' Canvas icon from the list of applications.

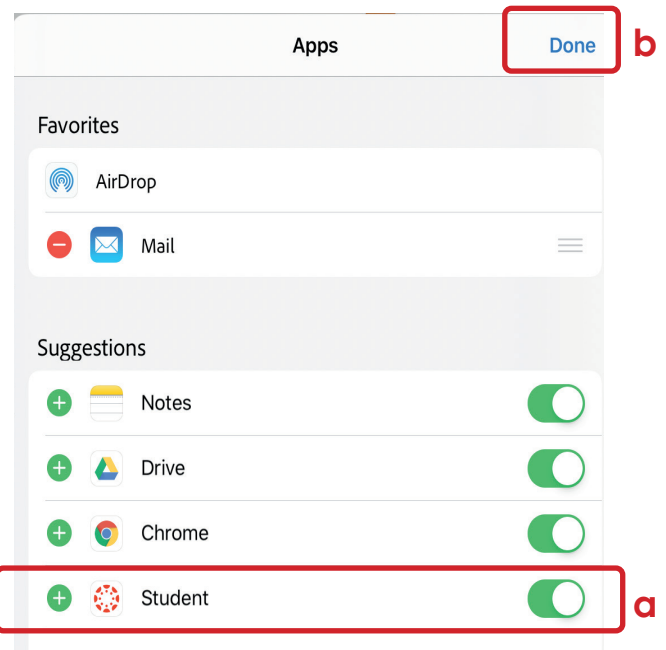


- If you cannot see the Canvas Student App, scroll right and tap on the three dots (**More**) then tap '**Edit**'.

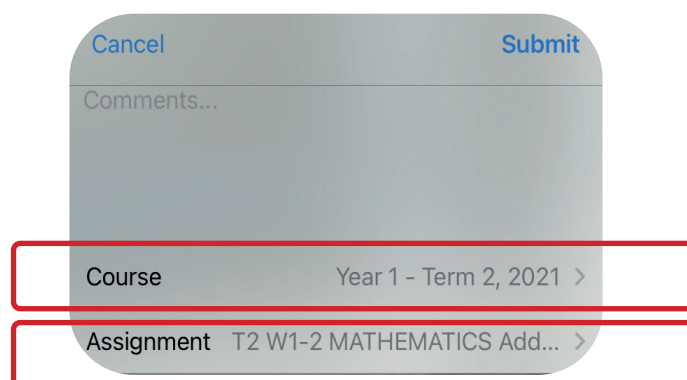


- To make Canvas Student App visible for future use follow the steps below

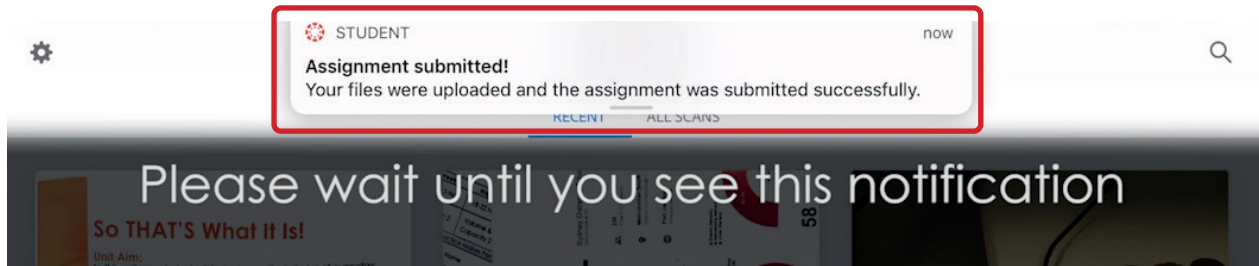
- Scroll down the suggested applications until you see Canvas Student App.
- Turn '**Student**' on (showing green) located to the right of the application.
- Tap '**Done**'. Tap '**Done**' again.



- Select your student's '**Course**' and then select '**Assignment**' you are submitting the work. Add a comment to the teacher, if needed.



8. Wait in Adobe Scan until you receive a notification to say your work has been successfully submitted.



If you wish to view your submissions:

1. Navigate to the specific assignment in Canvas Student App,
2. Tap on '**Submission & Rubric**' and
3. Tap '**Comments**'.

Here you will see all submitted work and comments/ feedbacks in date order for that assignment.

## SDEPS Technology Support

If you need further support, please do not hesitate to contact our school's technology support.

Scan the QR Code to watch Canvas support vidoes.



[How to sign in to SDEPS Canvas using @education account](#)



[How to set up a Canvas Parent Account \(SDEPS\)](#)



[Request IT Support](#)